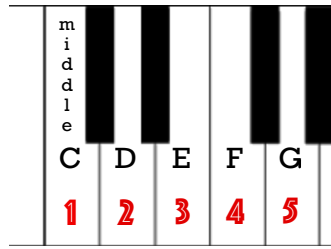
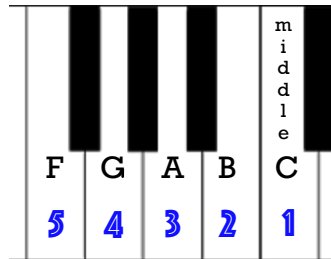
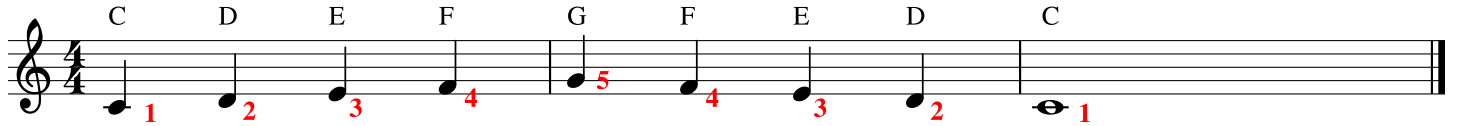


# FIRST SCALES/EXERCISES - POSITION 1



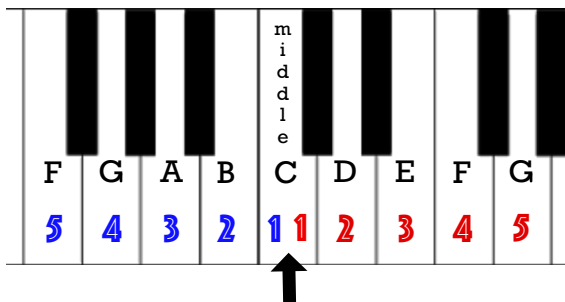
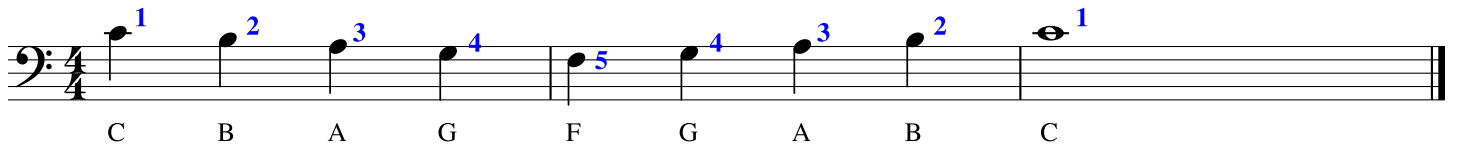
## EXERCISE 1 - RIGHT HAND

**RED FINGER NUMBERS  
MEANS RIGHT HAND!**



## EXERCISE 2 - LEFT HAND

**BLUE FINGER NUMBERS  
MEANS LEFT HAND!**



Thumbs Share 'Middle C'

## EXERCISE 3 - HANDS TOGETHER

**RED NUMBERS - RIGHT HAND  
BLUE NUMBERS - LEFT HAND**

